

SPECTATOR INFORMATION



9TH APRIL
2022

rallynuts

STAGES RALLY

WWW.RALLYNUTSRALLY.CO.UK



IMAGES COURTESY OF RALLYSPORT MEDIA
& MALCOLM ALMOND



A QUALIFYING ROUND OF:



SPECTATE SAFELY!



ARI
NEEDS
YOU
TO

Be alert!

Always expect the unexpected

Stay at the designated spectator areas

Remember that in an accident anything can happen

Always follow the instructions of the marshals

Your safety – Your life

ONLY A SAFE RALLY IS A GOOD RALLY

#AriNeedsYou



motorsportuk.org

A SAFETY MESSAGE

The safety of everyone that is involved with, participates in or spectates at the rally is our top priority, and so we ask that you read the following and keep it in mind on this and any other rally you may attend.

Please listen to the marshals they are there for your safety and want to ensure that we run the safest rally possible. If they ask you to move or inform you that you are standing in an unsafe place please follow their instructions.

Spectators who are asked to move but refuse to do so are putting their own safety and that of others at risk. Where this happens the rally marshal has authority to notify the stage commander, who will take appropriate action, which may include stopping the stage or the stage being cancelled.

Rally cars can do the unexpected so, for your own safety and that of others, please:

- **Respect the marshals and follow their instructions**
- **Observe the colour coded tape and all signage.**
Red and White means PROHIBITED AREA, so a no-go location for everyone.
Black and Yellow are the designated spectator areas - please stay within these areas.
- **Use the natural environment to protect yourself**
- **Don't walk on the rally stage**
- **Stay standing and remain alert**
- **Remember that alcohol and drugs can impair your responses and threaten your safety**
- **PLEASE ENSURE YOU TAKE YOUR LITTER HOME WITH YOU - OUR CONTINUED USE OF THE FORESTS AND LANDOWNERS PROPERTY DEPENDS ON YOUR COOPERATION.**



DANGOS SYMPTOMAU?

Cadw eich tîm yn ddiogel.

Arhoswch yn y tŷ os oes gennych chi, neu unrhyw un yn eich cartref, symptomau.

ATAL LLEDAENIAD. CADW CYMRU'N DDIOGEL.

SHOWING SYMPTOMS?

Keep your team safe.

Stay at home if you, or anyone in your household, has symptoms.

STOP THE SPREAD. KEEP WALES SAFE.

Am fwy o wybodaeth ewch i
llyw.cymru/coronafeirws

For more information go to
gov.wales/coronavirus

CORONAFEIRWS

**AMDDIFFYN
EICH HUN AC
ERAILL**

CORONAVIRUS

**PROTECT
YOURSELF
& OTHERS**



Llywodraeth Cymru
Welsh Government



GOLCHWCH EICH DWYLO.

ATAL LLEDAENIAD. CADW CYMRU'N DDIOGEL.

WASH YOUR HANDS.

STOP THE SPREAD. KEEP WALES SAFE.

Am fwy o wybodaeth ewch i
llyw.cymru/coronafeirws

For more information go to
gov.wales/coronavirus

CORONAFEIRWS

**AMDDIFFYN
EICH HUN AC
ERAIL**

CORONAVIRUS

**PROTECT
YOURSELF
& OTHERS**

**KEEP IT
CLEAN**

**Don't give
pests and
diseases
an easy ride**

Human activity is a key factor in the spread of pests and diseases, being able to move them faster and over longer distances than natural means of spread can.

Visitors to the woodlands can play an important part in preventing the spread of pests and diseases. We can unknowingly encounter infection as we walk through the woodland, this can be spread by the mud & leaves that collect on our footwear or wheels. Infection could be spread to the next place we visit if we do not clean our footwear and bikes before our next visit.

You can help reduce the spread of pests and diseases by carrying out simple cleaning tasks. These will hopefully become second nature as you get used to arriving for each walk or bike ride with clean equipment. You can also keep an eye out for any sightings of possible tree disease or pest and report to TreeAlert.

Think feet

Arrive in the woodland with clean boots or shoes. You'll be sure you aren't carrying tree pest or disease from your last walk in the countryside.

After your visit, simply knock any mud and leaves from your footwear and wash any leftover mud off once you're home. This will ensure you don't accidentally move disease across the countryside.

Think wheels

Arriving in the woodland with clean bikes can help prevent the spread of tree diseases too. Brush off any loose dirt from your bike & tyres before you leave the woodland. Once you're home, wash any further mud or debris just to be thorough.

Keeping your bike clean does more than keeping it looking good and working well.

Think future

Keeping it clean really is that simple. You may be wondering what real difference you can actually make - but if we all take small steps together now, we're taking big steps toward keeping Wales' woodlands and countryside beautiful for generations to come.

For areas known to be infected:

Keeping your kit clean is always important for tree health, but there are situations where you may have to take more care.

- When there is a pest or disease known to be present
- There is a Plant health Notice in place

In these cases you are likely to notice a lot more signage around the woodlands.

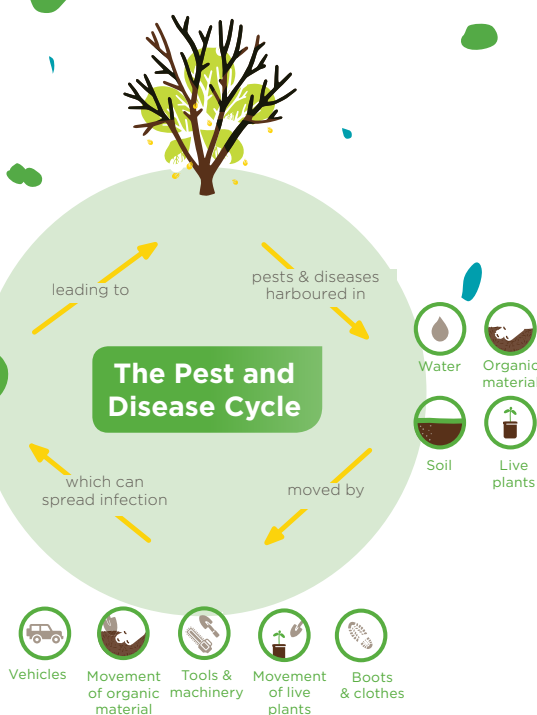
Please take the advice given on any of these signs you come across, they will contain important information in the battle against tree pests and diseases.

Key contacts and resources

- Stay up to date:
- Tell us if you spot any ill health in trees: forestry.gov.uk/treealert
- Learn more from our biosecurity info

For more information on our #Keepitclean campaign visit <https://naturalresources.wales/forestry/tree-health-and-biosecurity/biosecurity/?lang=en>

The Pest and Disease Cycle



ELFYN



NEEDS
YOU
TO

SPECTATE SAFELY!

Assisting Rally Cars:

This is a risky activity – AVOID!

If one car goes off, the next might, too

NEVER risk your own safety

If you HAVE TO assist...

ALWAYS ensure that one person acts as LOOKOUT

ALWAYS be aware of the DANGERS

#ElfynNeedsYou



motorsportuk.org/rallyfuture

Event Timetable

Friday 8th April

13:00 - 18:30	Rally HQ & Scrutineering	Royal Welsh Showground, Builth Wells WTW: ///maddening.specifies.mess
---------------	--------------------------	--------------------------------------------------------------------------

Saturday 9th April

08:00	Rally Start	Royal Welsh Showground, Builth Wells WTW: ///maddening.specifies.mess
-------	-------------	--------------------------------------------------------------------------

11:30	Service Halt	Royal Welsh Showground, Builth Wells WTW: ///maddening.specifies.mess
-------	--------------	--------------------------------------------------------------------------

16:25	Rally Finish	Royal Welsh Showground, Builth Wells WTW: ///maddening.specifies.mess
-------	--------------	--------------------------------------------------------------------------

Entry to the showground is free of charge. Vehicles will be moving throughout the weekend - please be aware of your surroundings and dogs MUST be kept on leads.

Running order

Classes RF1.4, RF2.0, 1400C, 1400S and H1 and H2 at the front of the field and run in reverse seeded order, (slowest first); followed by the main field in seeded order based on anticipated performance. *Please head to www.rallynutsrally.co.uk for the latest entry list.*



Spectator Information

There are three official spectator locations in 2022, all providing a great view of the action to enable you to enjoy this years Rallynuts Stages Rally. Toilet facilities are available at all locations. Catering will be available at the Myherin and Hafren Sweet Lamb / Hafren Main spectator areas.

TICKETS FOR EACH LOCATION ARE PAYABLE ON THE GATE ONLY AND MUST BE PAID IN CASH - THERE ARE NO CARD FACILITIES ON SITE.

SS1 & SS4 - Myherin

First Car Due 09:03 & 13:53

Cost: £10 PER CAR (tickets non transferable)

Parking at this location is accessed by Devil's Bridge and The Arch.
What Three Words for this is: [freedom.allies.shippers](#)

SS 2 & SS 5 - Hafren Sweet Lamb / Hafren Main

First Car Due 09:55 & 14:43

Cost: Landowners charge of £10 PER PERSON (tickets non transferable)

Parking at this location is accessed off the A44, West of Llangurig.
What Three Words for this is: [submitted.lilac.valuables](#)
Postcode is: SY18 6SY

SS 3 & SS 6 - Cwmysgawen

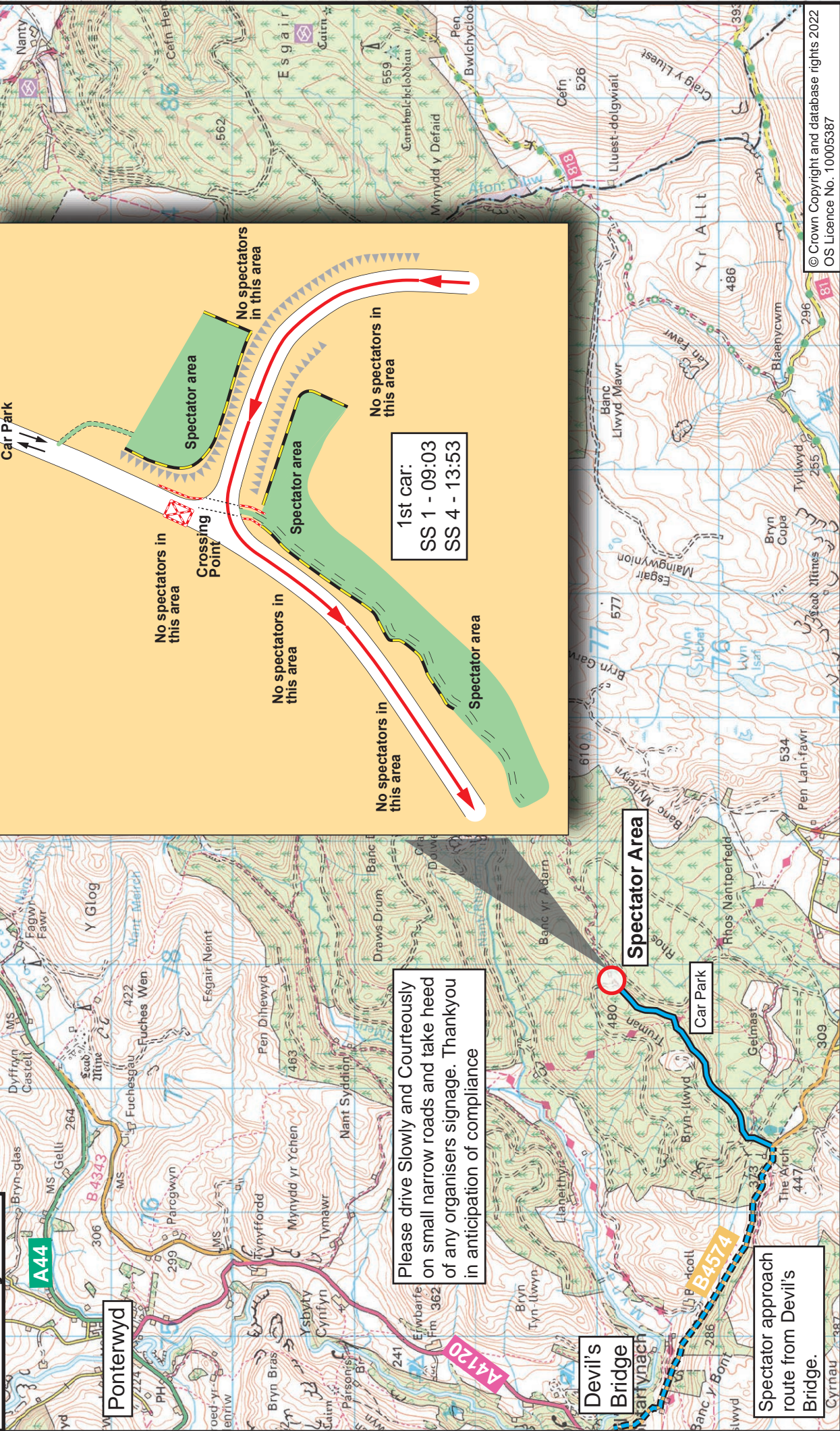
First Car Due 10:48 & 15:40

Cost: £10 PER CAR (tickets non transferable)

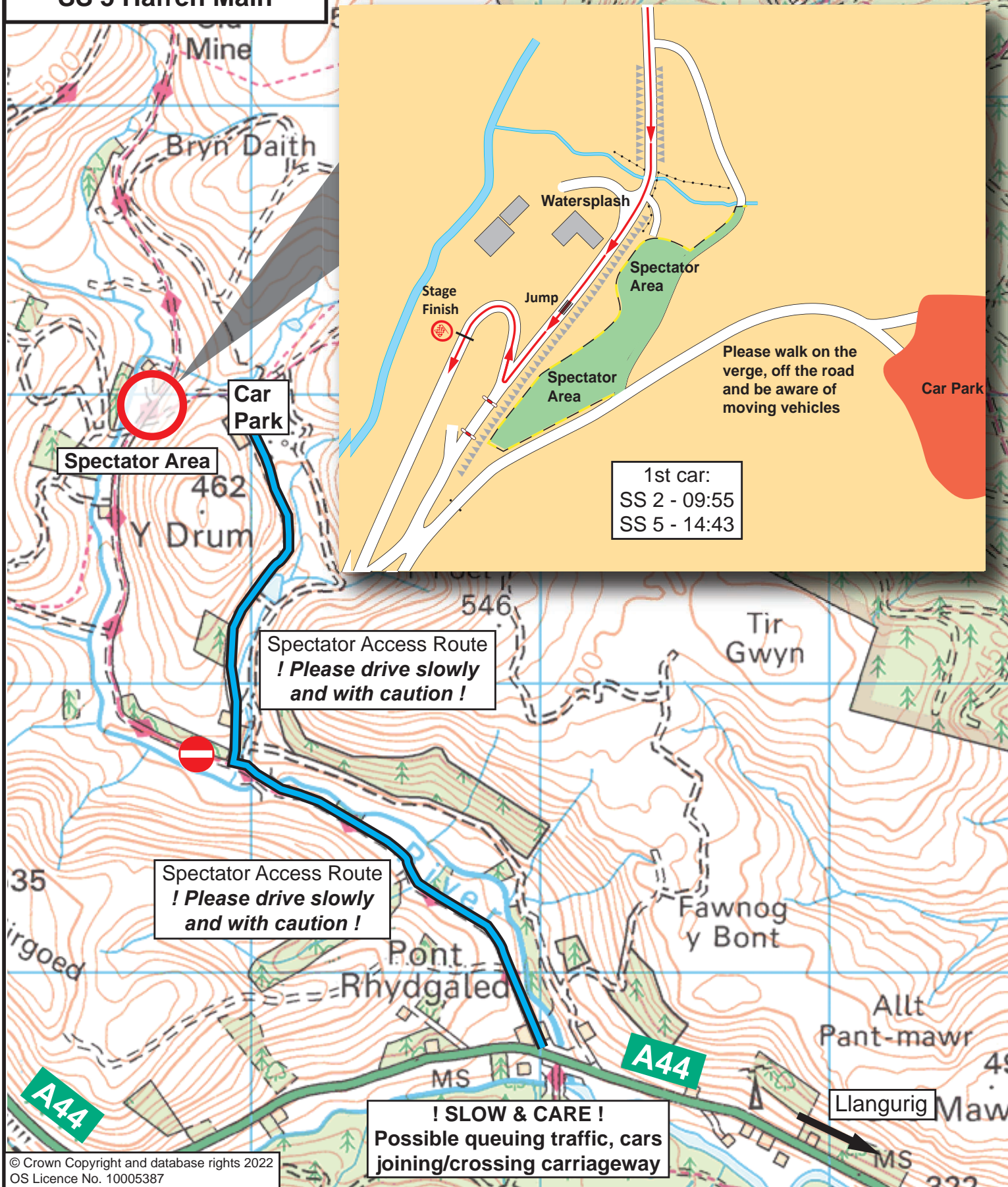
Parking at this location is accessed off the A483 at Crossgates ONLY as per the map.
What Three Words for this is: [decorate.conspired.thickens](#)

Follow the spectator arrows until you reach the forest entrance
What Three Words for this is: [surcharge.submit.closet](#)

Rallynauts Stages
Saturday 9 April 2022
Spectator Map
SS 1 & 4 Myherin

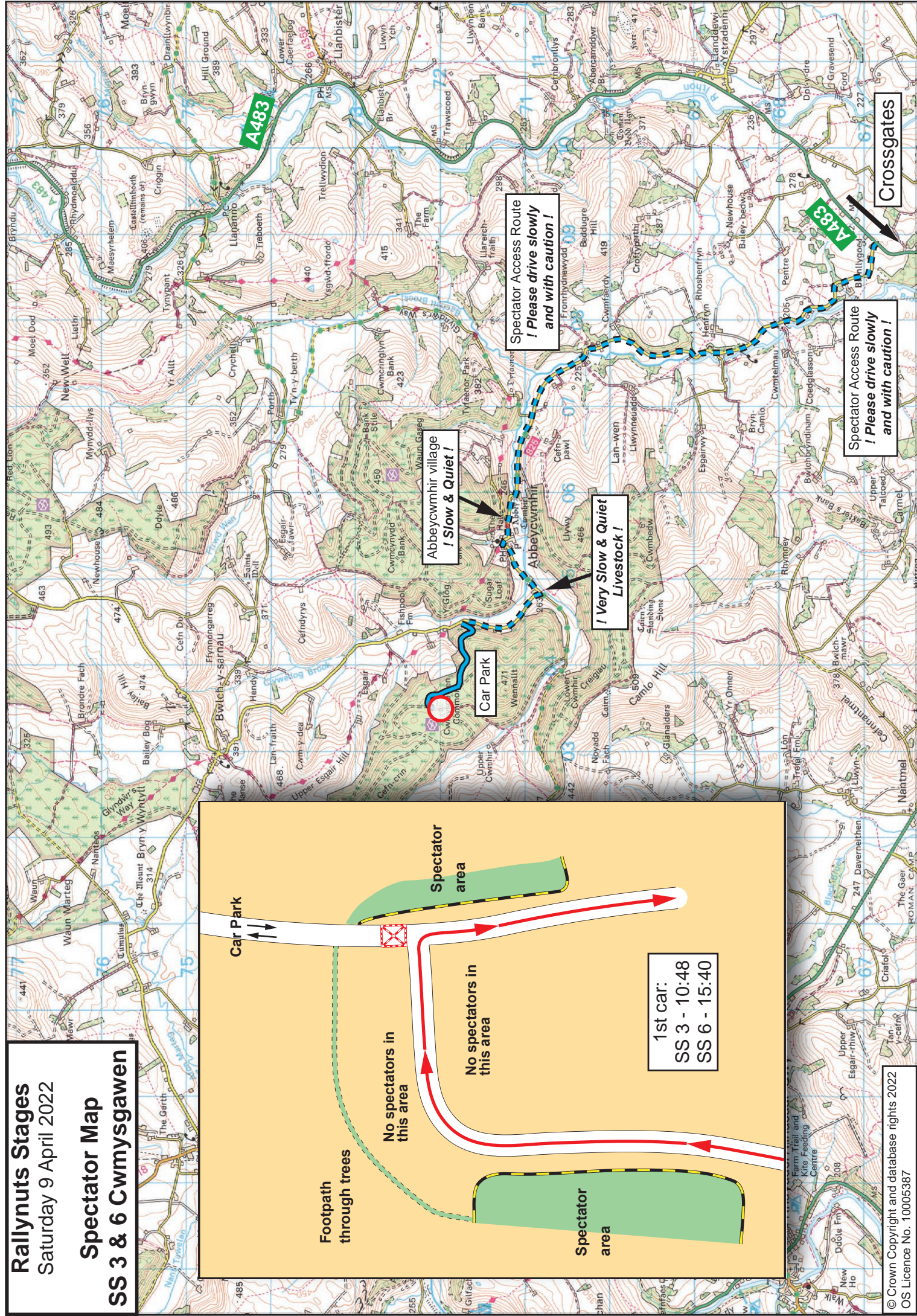
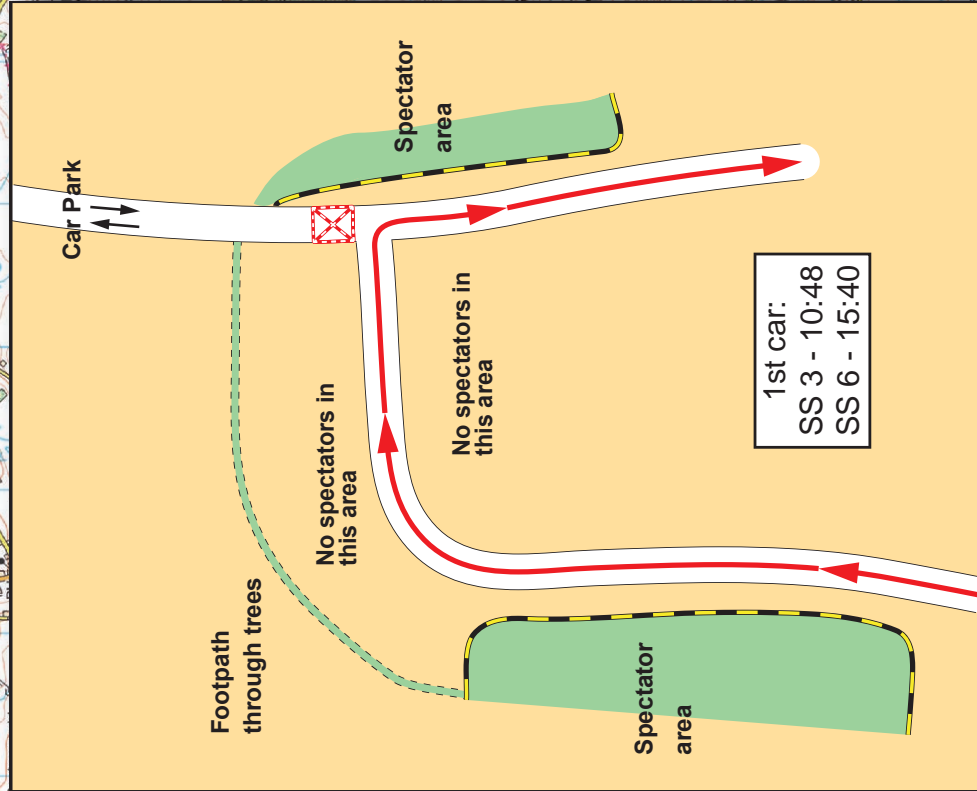


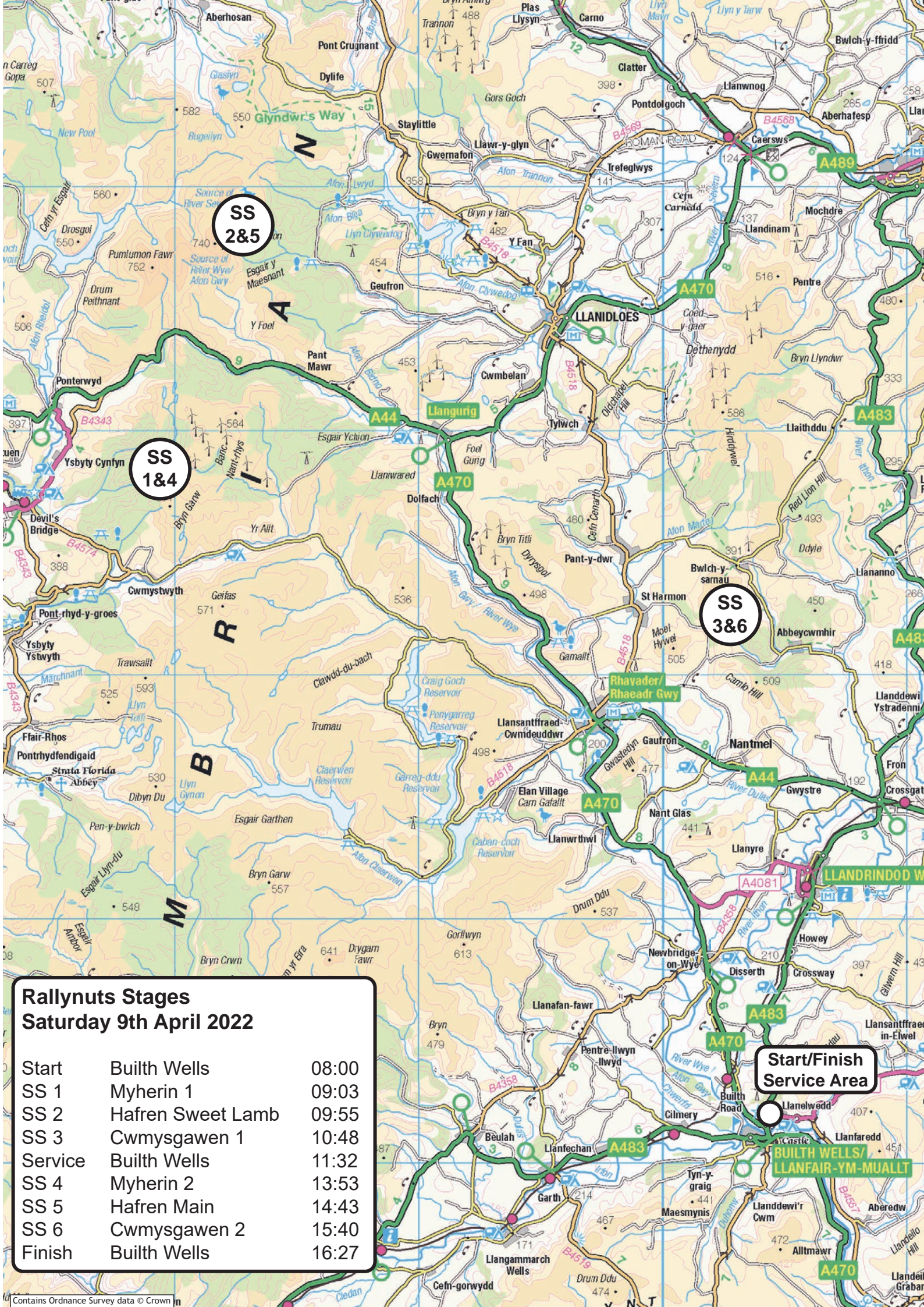
SS 5 Hafren Main



Rallynuts Stages
Saturday 9 April 2022

Spectator Map **SS 3 & 6 Cwmysgawen**





Rallynuts Stages

Saturday 9th April 2022

Start	Builth Wells	08:00
SS 1	Myherin 1	09:03
SS 2	Hafren Sweet Lamb	09:55
SS 3	Cwmysgawen 1	10:48
Service	Builth Wells	11:32
SS 4	Myherin 2	13:53
SS 5	Hafren Main	14:43
SS 6	Cwmysgawen 2	15:40
Finish	Builth Wells	16:27

Start/Finish
Service Area

BUILTH WELLS/
LLANFAIR-YM-MUALLT

Rallynuts Stages Rally partners with Carbon Positive Motorsport, to provide carbon offsetting

The Rallynuts Stages Rally will be the first BTRDA Championship event of 2022 to take steps to minimize its carbon footprint through certified carbon offsetting projects.

Carbon Positive Motorsport was launched last year and provided offsetting to competitors at all levels of the sport, including current British Rally champion Matt Edwards, former Scottish Rally Champion Jock Armstrong, 2021 Scottish Ladies Rally Champion Ashleigh Morris, and Matthew Jackson.



The company who provides carbon offsetting for motorsport events, teams, competitors, and spectators, will provide carbon positive levels offsetting for all the rally organisation vehicles on the event itself. This level of offsetting will provide, 25% more carbon offsetting in the future than is generated today through the fuel use associated with their participation.

To further reduce the events environmental impact, Carbon Positive Motorsport are also offering all competitors, marshals, and spectators a 20% discount on their standard web shop prices, to encourage all to help the event bring a positive environmental impact.

The initiative forms the first step of a partnership that will help create a environmental road map for the event for the coming years, to progressively increase the carbon offsetting of the events footprint.

"Midland Manor Motor Club and the Rallynuts Stages Rally recognise our Environmental responsibilities by trying to reduce the number of vehicle movements during the event" says Event Secretary Steven Tibbetts.

"To that end we will continue to operate a central service area at The Royal Welsh Showground and have prohibited the use of Management Vehicles by competitors. Where we are unable to restrict or reduce vehicle movements, we are working in partnership with Carbon Positive Motorsport to offset the carbon footprint of our safety convoy vehicles and are offering competitors; marshals; and spectators to do the same.

By logging on to www.carbonpositivemotorsport.com and using the discount code RNS22CS, they can receive a 20% discount on the carbon offset based on the amount of fuel they will use on the event."

carbon**positive**motorsport.com

We are delighted to offer all Rallynuts Stages Rally competitors and spectators a 20% discount on our range of carbon offsetting services available on our online sales platform.

With prices starting from less than 14p per litre it's a small cost that makes a big difference.

Rallynuts Stages Rally Discount Code RNS22CS
discount codes are valid between 23/3/22 – 13/4/22

for exclusive content and offers follow us @



WE HAVE IT ALL!

FULL RANGE ONLINE



rallynuts

MOTORSPORT
RACEWEAR AND ACCESSORIES

RACE/RALLY/KARTING • SUITS • BOOTS • GLOVES • UNDERWEAR • HELMETS

HELMETS



BELL MAG RALLY

£319.57



SPARCO AIR PRO R3-51

£570.65



STILO WRC PIUMA DES

£1045.45

OBP BRAKING



OBP PRO V3

£1000.07



OBP PRO V2

£335.11



OBP MASTER CYLINDER

£34.23

STEERING WHEELS



SPARCO 345

£136.04



OMP WRC

£148.83



OMP SUPERQUADRO

£154.30



R-TECH WHEEL

£79.00

SEAT & HARNESS PACKAGE



PACKAGE DEAL

2 X OMP TRS SEATS
2 X TURN ONE SPEED HARNESSES
2 X SIDE MOUNT BRACKETS
2 X SEAT BOLT KITS

£620.29 + VAT

CAR PREP & TOOLS



MSA TOW WIRES

TWIN PACK £24.79



MUDFLAPS 4MM

£12.95



3 TON AXLE STANDS

£71.49

18V IMPACT GUN

£124.95



RALLYNUTS



RALLYNUTS OFFICIAL TEAMWEAR

SEE WEBSITE



RALLYNUTS LARGE CAR STICKER

£2.95



DUNLOP DZ03G

FROM £109



HANKOOK Z205

FROM £124.19



HANKOOK R203

FROM £115.00



*CANNOT BE USED WITH ANY OTHER OFFER
ALL PRICES EXCLUDE VAT

6 Palmers Road, Redditch, B98 0RF

T. 01527 519400 WWW.RALLYNUTS.COM

FOLLOW US ON



TURN ONE

OMP

COBRA MOTORSPORT

Arai

sparco

stilo

SCHROTH RACING

obp MOTORSPORT

**WE HAVE
IT ALL!**

**FULL
RANGE
ONLINE**



rallynuts
MOTORSPORT
RACEWEAR AND ACCESSORIES

RACE/RALLY/KARTING • SUITS • BOOTS • GLOVES • UNDERWEAR • HELMETS

HARNESSES



**SPECIAL
OFFER**

**TURN ONE SPEED
6 POINT FIA
HARNESSES**

£109+ VAT

RACE AND RALLY SUITS



OMP SPORT
£245.61



SPARCO COMPETITION
£409.96



OMP FIRST EVO
£409.96



SPARCO EAGLE
£995.22

SEATS



OMP FIRST R
£273.00



SPARCO GRID O
£324.13



OMP TR5-E
£181.70



SPARCO REV ORT
£305.87

RACE AND RALLY GLOVES



SPARCO LAND
£59.35



OMP FIRST-5
£63.00



OMP ONE-5
£115.04

RACE AND RALLY BOOTS



SPARCO SLALOM
£77.61



OMP FIRST
£123.26



SPARCO SKID
£154.30



OMP ONE-5
£191.74



OMP EVO X R
£327.78



SPARCO X-LIGHT+
£364.30

UNDERWEAR



TURN ONE PRO
£24.95



OMP ONE
£86.09



SPARCO RW-6
£33.78



OMP ONE
£118.70



*CANNOT BE USED WITH ANY OTHER OFFER
ALL PRICES EXCLUDE VAT

6 Palmers Road, Redditch, B98 0RF

T. 01527 519400 WWW.RALLYNUTS.COM

FOLLOW US ON

TURN ONE
sparco

OMP
stilo

COBRA
MOTORSPORT
SCHROTH
RACING

Arai
HELMETS
obp
MOTORSPORT